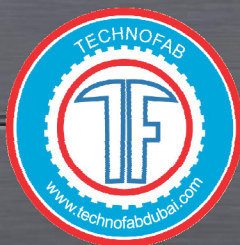


# Shaping Steel For Tomorrow



**TECHNOFAB**  
TECHNICAL SERVICES  
L.L.C

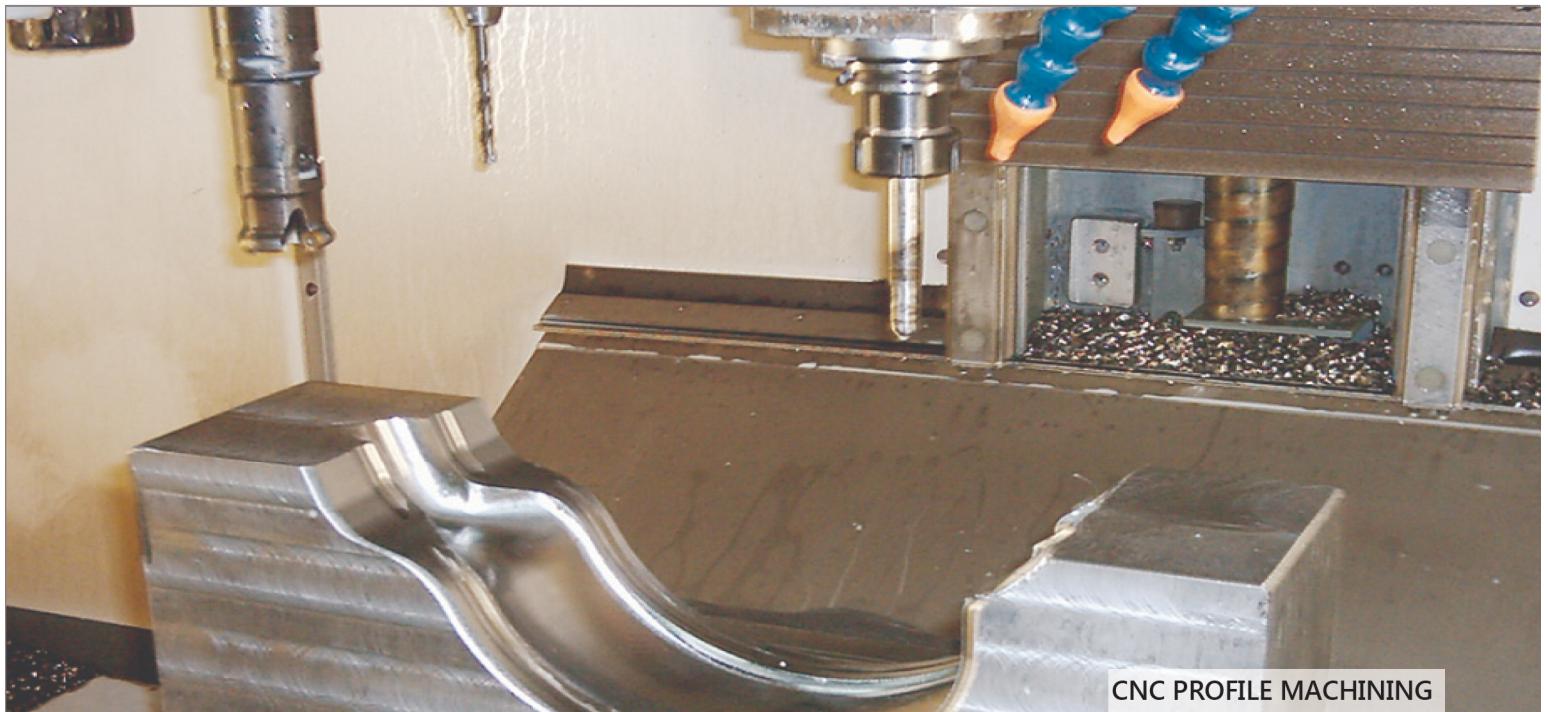


STEEL FABRICATION | TOOL & DIE | MOULDS | SPECIALISED CNC MACHINE SHOP | TURNKEY PROJECTS | AUTOMATION |

**T**echnofab Technical Services LLC) Dubai is an *ISO 9001-2008* certified company and an integrated

business, offering end-to-end 'fabrication, tooling and engineering solutions'. It was incorporated in 2005 by a technocrat, Kesari, with over two decades of hands-on experience in dealing with steel, mechanical engineering and various other industrial applications. The company specializes in metal fabrication; industrial tool design and die-making; turnkey projects; automations, Electromechanical, Fabrication and installation of Steel works for DEWA Substations.

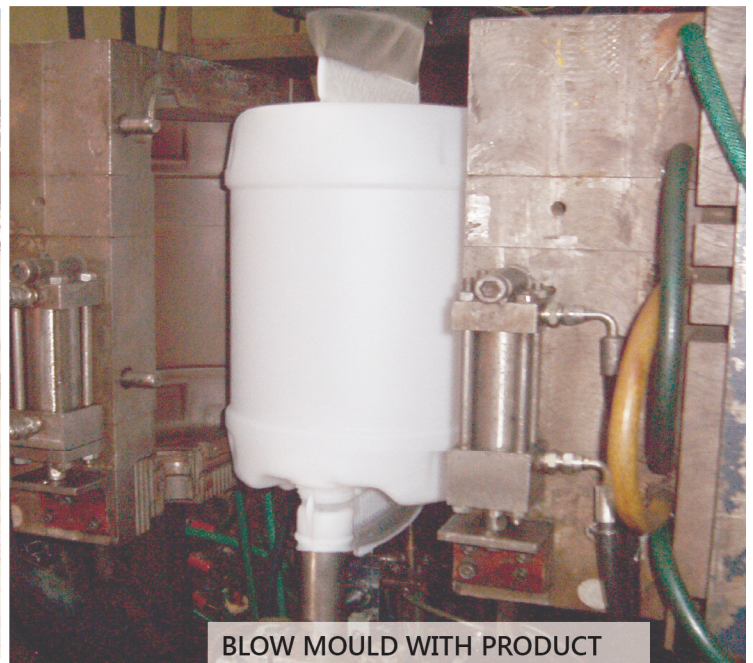
At Technofab, we provide technical assistance, in-shop fabrication, field installations and 24-hour emergency breakdown services as well. Our excellent customer service begins with our friendly office staff and reflects in the high standards of organization and cleanliness at our facility and in the way our crew conduct themselves at your facility. Commitment to high standards of work and fair and honest pricing in our bids is the hallmark of our service. Located in Ras Al Khor Industrial Area, Dubai we serve all of The UAE and clients in USA, Mexico, Malaysia, China and GCC Countries.



**CNC PROFILE MACHINING**



**STRUCTURAL DAVITS  
SUPPLIED TO TURNKEY PROJECT**



**BLOW MOULD WITH PRODUCT**

# Fabrication Capabilities



We are proud of our ability to design and fabricate solutions customised to the specific needs of our clients. Each project is unique, and specific care is taken right from the preliminary design stage of the project to ensure complete satisfaction of the client and 'operational and maintenance' viability. While the majority of our products are standardised, we have drawn upon our many years of experience and technological acumen to refine our standard design concepts and consistently provide reliable and precision pieces of equipment to suit specific requirements.

## Fabrication Range:

- Turnkey Projects (Electromechanical and Instrumentation Projects)
- Automation Projects
- Pressure Test Cells
- Carts, Pipe Transferring Systems and Conveyors
- Storage Tanks, Handrails, Skylights and Garbage Buckets
- Structural Steel & Warehouses
- Canopy, Structural Davits and Light Duty Cranes
- Ducts, Chutes, Bins and Hoppers
- Dividing Beams and Pit Maintenance Platforms
- Sewerage Pipes and Water Pipes
- Compressor Housings, Exhaust Motor Housings
- S.S Electrical Switch Plates
- DEWA Substation Steel Works
- Oil field Industries
- Winches & skids
- Machining Related Fabrications

Apart from fabrication, Technofab is able to install/erect and redesign the client's facilities.

*"When it comes to challenging assignments, Technofab has always proved equal to the task, exceeding client and industry expectations by executing the tasks well in time and within the stipulated budget. Look no further for a top grade steel fabricator that understands quality and the value of serving a customer."*

Name : P.Ramakrishnan  
Designation : Project Manager  
Company : Faradays Technologies



# Fabrication Capabilities



PRESSURE TEST ENCLOSURE  
SUPPLIED TO THE USA, MEXICO, MALAYSIA AND CHINA



AUTOMATION PROJECT  
SUPPLIED AND INSTALLED AT SAUDI ARABIA



# Fabrication Capabilities



# Fabrication Facilities



CNC PLASMA CUTTING MACHINE

## FABRICATION SHOP

CNC Plasma Cutting  
Plate Rolling Machine  
Pipe and Section Bending Machines  
Power Press  
Iron Worker  
Shearing and Bending  
Arc Welding Machines  
Co2 Welding Machine  
Tig and Mig Welding Machines  
Pug Cutting Machine  
Portable Plasma Cutting  
Magnetic Drill Machine



SHEARING AND BENDING MACHINE



PLATE ROLLING MACHINE



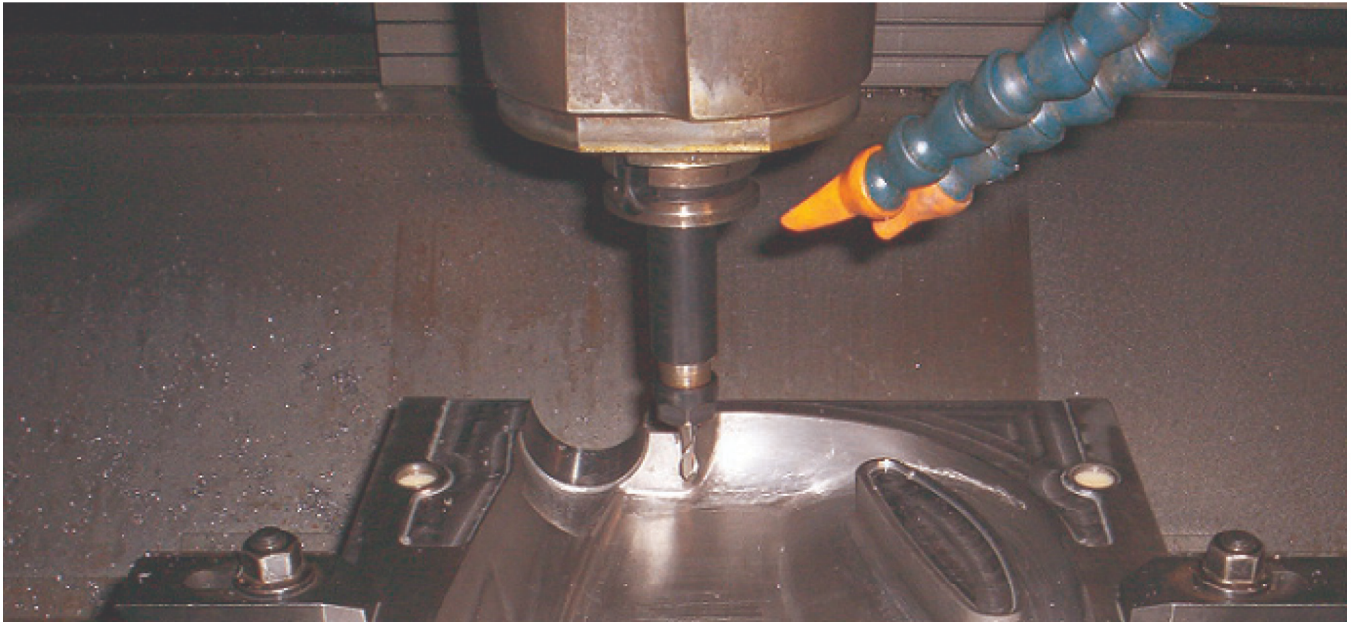
PIPE BENDING MACHINE



HEAVY DUTY IRON WORKER



HEAVY DUTY POWER PRESS

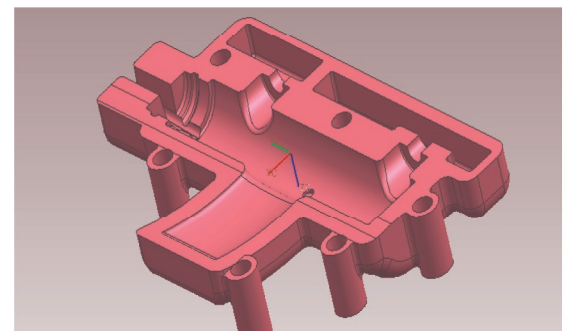


Equipped with large-scale tooling, Technofab features a variety of Tool Design, Tool & Die Making and Die Design Services. Beginning with 3D CAD Design and Modeling, we work with you to engineer the solution that best suits your needs. We feature a range of die types and tooling options, and work with materials such as aluminium, brass, copper, and stainless steel.

We use special grading of material such as P20, Alumech 79, OHNS, H13, D2, EN8, EN19, and EN24 in tool and die making. Featuring wire EDM and in-house treatment services, we're equipped to handle everything from prototypes to large-scale production volume runs. Technofab is accredited with ISO 9001-2008 and our 'Quality and Accuracy System' has been meticulously developed in accordance with international standards. We use the latest range of CAD/ CAM technologies for design and manufacturing to optimize results. Our 'Tool Room' solutions meet pinpoint precision in line with the requirements of the clients. Customization is our forte, be it replacement and maintenance of industrial parts or hydraulic parts.

## We specialize in

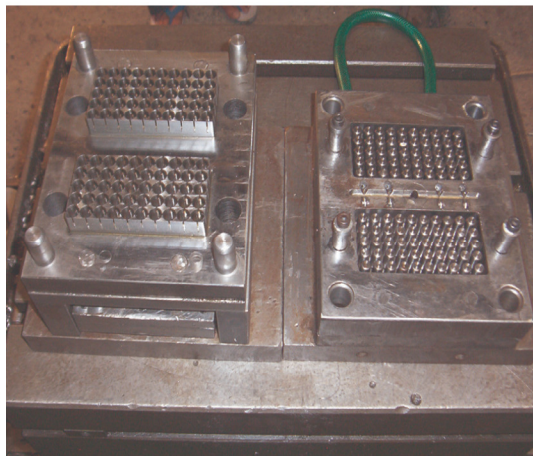
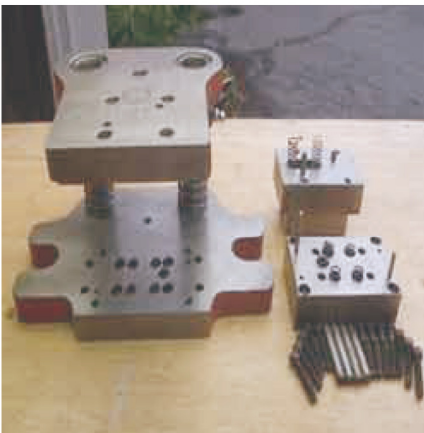
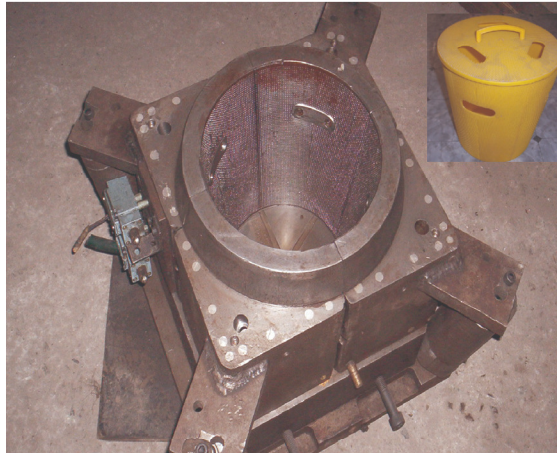
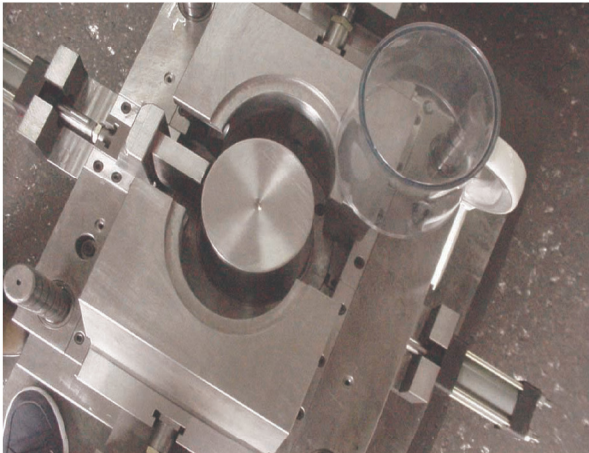
1. Precision CNC and Profile Machining
2. Designing and Manufacturing of Dies and Moulds
3. Press Tools
4. Jigs and Fixtures
5. Designing of Plastic Components



# Tool, Die and Mould Design

## FROM TOOL ROOM

- Injection Moulds
- Blow Moulds
- Vacuum forming Dies
- Press Tools
- Prototype Models
- Bending Rollers,
- Punches and Dies
- Sizers, Die cores



# Machine Shop



## Manufacturing Facilities

### CNC Milling Machine

CNC Lathe

Sparking (EDM)

Cylindrical Grinding Machine

Surface Grinding Machine Conventional

Milling Machine Conventional

Lathe Machine

Drilling Machines

Power Band Saw Machine

Air Compressors

Tool Room Precision Tools & Equipment

All kinds of Machining Jobs

Oil field job works

Glass, Pneumatic and Hydraulic

Fittings, Oilfield Spares Etc Industrial

Spares and Replacements



# Turnkey projects & Automation

Our Turnkey Automation Projects include Custom Fabricated Solutions, Installation and Commissioning Services. We offer Turnkey Project Services to

- Oil Fields
- Food Industries
- Cement / Chemical Plants
- Processing Industries
- Manufacturing industries.

## Off site Services

Off-site pre-fabrication is done at our well equipped workshop with the help of advanced machines, technology and welding equipment.

## Installation & Commissioning Services

Onsite Installation and Commissioning Services comprise designing, supplying, installation, erection

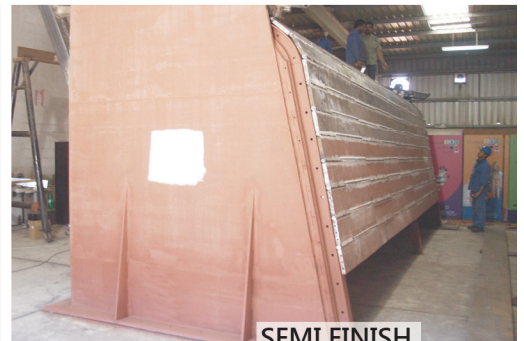
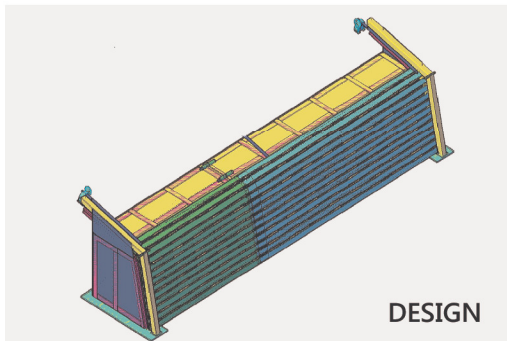
and commissioning of complete pre-fabricated structures and piping systems with guaranteed performance for longer periods of time:

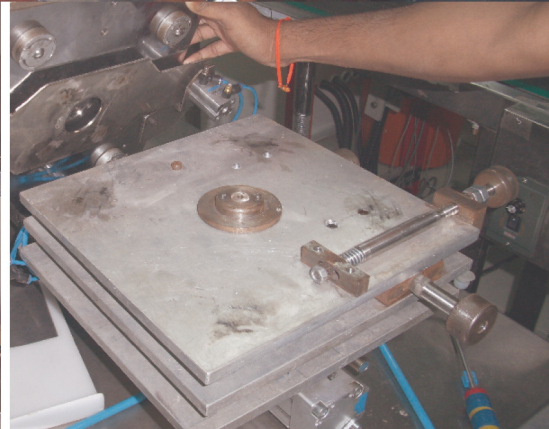
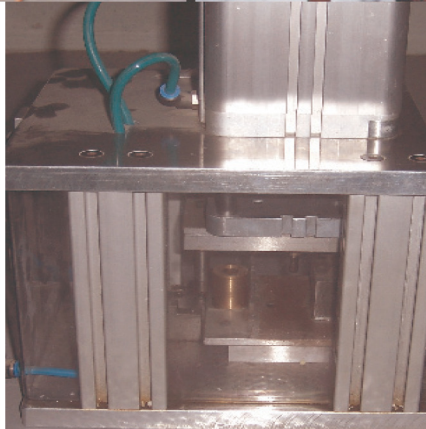
We are backed by our Technology Services subsidiary that offers successful and timely completion of projects, in verticals as diverse as manufacturing, infrastructure, roads and highways, education, defense, healthcare, hospitality and property development.

## Custom Fabricated Solutions

We are considered foremost among the major companies offering customized fabrication solutions in the Middle East and Asia. We have a team of experts with rich experience in the field, who have been part of various fabrication projects of Tanks, Vessels, Hoods, Ducts, Lined pipes etc.

### TURNKEY PROJECT | PRESSURE TEST ENCLOSURE STAGES USA, UK, Mexico, Malesiaya, China





# Quality and Procedures

Our products and processes follow meticulous standards at every level from welding to sustainability checks. The extensive testing processes and procedures are recorded for the purpose of client reference and providing timely and accurate product data. This practice also helps us to work towards an enhanced client experience every time.

## Certificates

- ISO 9001-2008
- DEWA Substations
- Welder Qualification Certificates
- Safety Training

## Welding Procedures

- Gas Metal Arc Welding (GMAW)
- Gas Tungsten Arc Welding (GTAW)
- Shielded Metal Arc Welding (SMAW)
- Submerged Arc Welding (SAW)
- Metal Inert Gas Welding (MIG)
- Tungsten Inert Gas Welding (TIG)
- Metal Active Gas (co2) Welding (MAG)
- Bare Metal Arc Welding (BMAW)

## Tests:

### Non Destructive testing (NDT)

- Ultrasonic Lamination Testing of Steel Plates
- Radiography Testing (X-Ray/Gamma Ray)
- Radiography Test with Pipeline X-Ray Crawler
- Magnetic Particle Testing

## Destructive testing

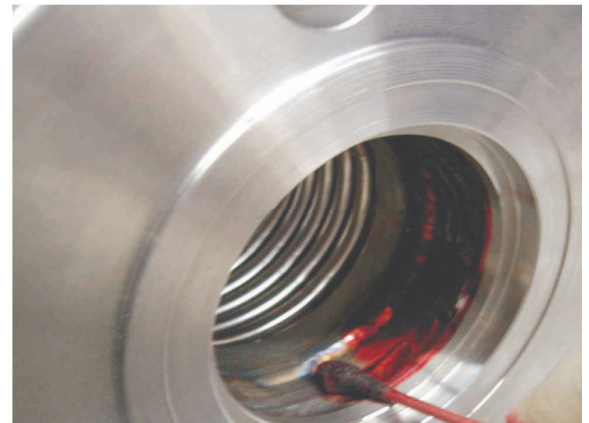
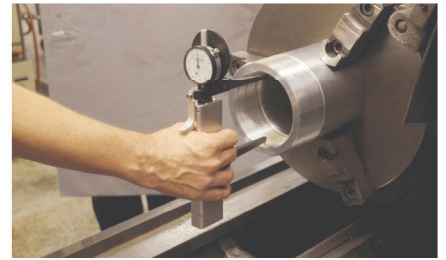
- Tensile Test
- Impact Test
- Bending
- Hardness Test

## Inspection

- Welding Inspection (AWS/CSWIP)
- Welder Qualification Test
- Preparation of WPS&PQR
- Painting Inspection

## Records & Documentation

- Record of requirement/technical review
- Material Test Certificates
- Welding Consumable Certificates
- Welding Procedure Specifications (WPS)
- Equipment Maintenance Records
- Welding Procedure Quality Approval Records (WPQR)
- Welder or Welding Operator Qualification Certificates
- Production Plan
- Non-destructive Testing Personnel Certificates
- Non-destructive Testing and Destructive Testing Procedures and Reports
- Dimensional Reports



# Our Clients – The Backbone of our Success



# Technofab Difference

## *Concept to Model, Tools to Towers!*

### **Machines:**

Top-of-the-line equipment

### **Models:**

In-house design capabilities from mechanical and manufacturing engineers

### **Turnaround:**

98%+ on-time delivery performance record

### **Quality:**

Our services and products meet your manufacturing processes requirements and your market demand

### **Clientele:**

Serving customers and clients from various industries, with personalized attention for over 15 years, now.

### **Customization:**

Technofab excels in delivering unique and customized solutions from concept to model by understanding the needs of client and Industry.

### **Integration:**

Design, manufacturing, delivery, installation, and annual maintenance



**TECHNOFAB**  
TECHNICAL SERVICES L.L.C

P.O BOX 211893.  
DUBAI, RAS AL KHOR INDUSTRIAL AREA, AWIR.  
TEL: 04- 3336713, FAX: 04 – 3336714  
Email: info@technofabdubai.com  
www.technofabduabi.com

